



## Rental Monaco - Fontvieille

PALAZZO LEONARDO - APARTMENT ON ONE FLOOR - SEA VIEW

**80.000 € / month**

+ service charges

9  
Rooms

4  
Bedrooms

3  
Bathrooms

750 sqm  
Total area

+5  
Parkings

Master apartment on an entire floor located in one the most sought-after and private residence in Fontvieille, benefiting from a splendid sea view.

7 Avenue des Papalins  
« Immeuble Michelangelo »  
98000 Monaco

L1642  
1 / 5

Tél : +377 92 16 16 32  
monaco@barnes-international.com  
www.valeri-agency.com



---

## Property features

---

Product type :	Apartment	Num rooms :	9
Building :	Palazzo Leonardo	District :	Fontvieille
Living area :	500 m <sup>2</sup>	Terrace area :	250 m <sup>2</sup>
Total area :	750 m <sup>2</sup>	Bedrooms :	4
Bathrooms :	3	Parkings :	+5
Cellars :	2	Condition :	Very good condition
View :	Panoramic sea view	Exposure :	South West
Release date :	Janvier 2026	Ref. :	L1642

---

## Descriptions

---

Luxurious apartment located in the prestigious and sought-after residence "Palazzo Leonardo", in the Fontvieille area. The residence, located less than 50 meters from the sea, benefits from a 24/7 concierge service and access to a private swimming pool. Close to many amenities (Heliport, shops, restaurants, schools, parks including the Princess Grace Rose Garden, beach).

This magnificent property on a whole floor with a total surface area of 700 sqm, including 200 sqm of terraces/loggias, benefits from a very nice sun exposure and a splendid sea view, overlooking the port of Cap d'Ail.

The flat consists of an entrance hall, two living rooms, a dining room with a spacious fully equipped kitchen and two offices. 4 bedrooms with dressing room and bathroom/shower, one of which has a jacuzzi. A massage room that can be transformed into a large office. Wine lovers will also appreciate the wine cellar which can accommodate 300 bottles. A laundry room and numerous cupboards add to the numerous spaces of the property.

The apartment is particularly well soundproofed thanks to quadruple glazing.

8 parking spaces and 2 cellars complete this property.



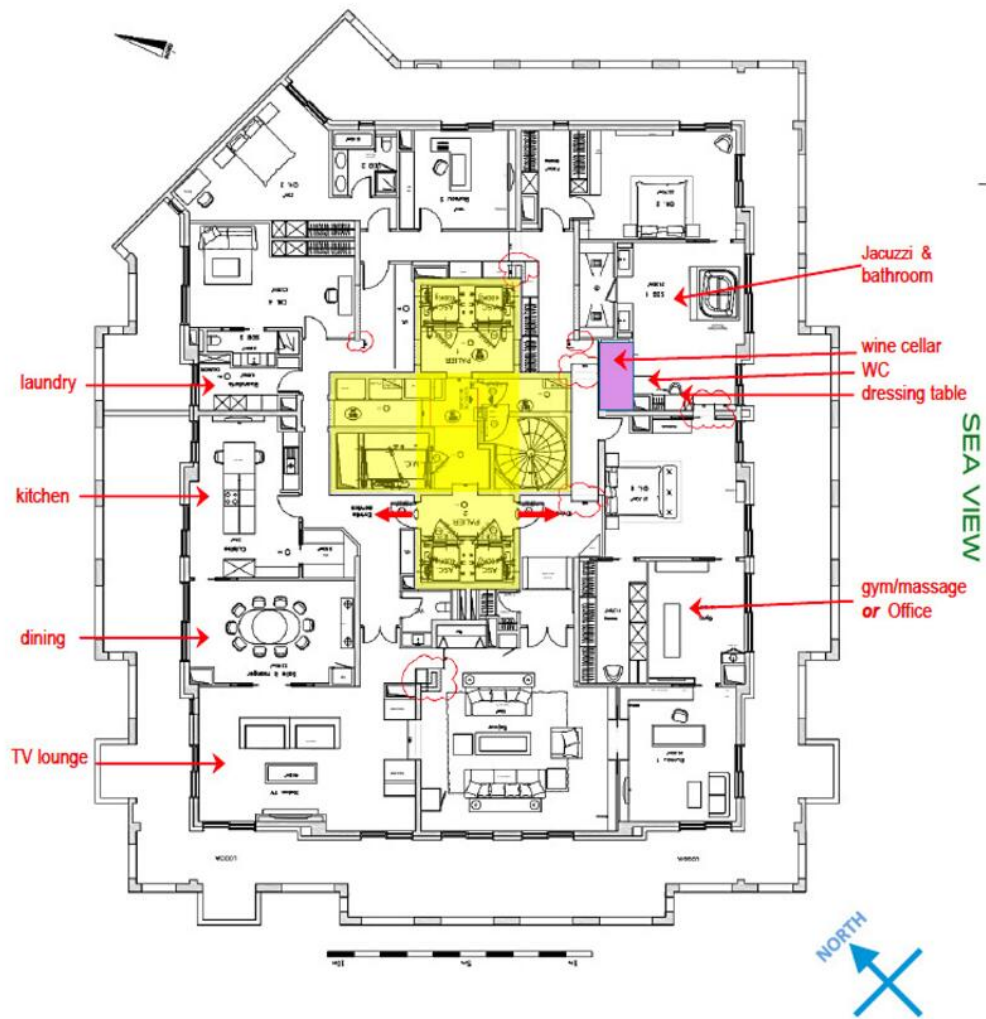
L1642  
3 / 5



L1642  
4 / 5



**MONACO VIEW**



**CAP D'AIL MARINA VIEW**

L1642  
 5 / 5